

TYLER POUNDS RGNL (TYR)(KTYR) 3 W UTC-6(-5DT) N32°21.23' W95°24.16'

DALLAS—FT WORTH

544 B ARFF Index—See Remarks NOTAM FILE TYR

H-6I, L-17D

RWY 04-22: H7802X150 (ASPH-GRVD) S-40, D-60, 2S-84, 2T-223, 2D-100, 2D/D1-212, C5-342 MIRL

IAP, AD

RWY 04: PAPI(P4L)—GA 3.0° TCH 45'. Thld dsplcd 2390'.**RWY 22:** REIL. PAPI(P4L)—GA 3.0° TCH 45'. Thld dsplcd 200'. Tree.**RWY 13-31:** H5200X150 (ASPH-GRVD) S-40, D-60, 2D-100 HIRL 0.5% up SE**RWY 13:** MALS. Pole.**RWY 31:** VASI(V4L)—GA 3.0° TCH 54'. Road.**RWY 17-35:** H4849X150 (ASPH-GRVD) S-40, D-60, 2D-100 MIRL 0.5% up S**RWY 17:** Tree.**RWY 35:** Tree.**RUNWAY DECLARED DISTANCE INFORMATION****RWY 04:** TORA-7201 TODA-7801 ASDA-7201 LDA-7201**RWY 13:** TORA-5200 TODA-5200 ASDA-5200 LDA-5200**RWY 17:** TORA-4849 TODA-4849 ASDA-4849 LDA-4849**RWY 22:** TORA-7601 TODA-7601 ASDA-7801 LDA-7601**RWY 31:** TORA-5200 TODA-5200 ASDA-5200 LDA-5200**RWY 35:** TORA-4849 TODA-4849 ASDA-4849 LDA-4849**SERVICE:** S4 FUEL 100LL, JET A OX 1, 3 LGT When twr clsd ACTIVATE

MIRL Rwy 04-22 and Rwy 17-35, MALS Rwy 13, and twy lights—120.1; HIRL Rwy 13-31 preset medium ints, to increase ints ACTIVATE—120.1. PAPI Rwy 04, and Rwy 22, VASI Rwy 31 operate continuously.

AIRPORT REMARKS: Attended 1100-0400Z†. Class I, ARFF Index A. Helicopters operating inbound or outbound to/from the downtown hospitals state intention on 123.075. West side passenger terminal ramp access rstd to air carrier. Noise abatement procedures in effect Call 903-590-3048. Conditions not monitored btn the hrs of 9:30 PM and 6:30 AM local.**AIRPORT MANAGER:** 903-531-2343**WEATHER DATA SOURCES:** ASOS (903) 535-9105 LAWRS.**COMMUNICATIONS:** CTAF 120.1 ATIS 126.25 UNICOM 122.95

RCO 122.3 (FORT WORTH RADIO)

Ⓡ LONGVIEW APP/DEP CON 128.75 (1200-0400Z†)

FORT WORTH CENTER APP/DEP CON 135.25 (0400-1200Z†)

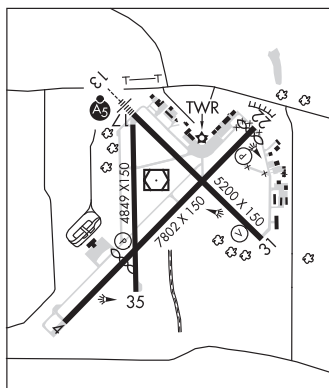
TOWER 120.1 (1230-0330Z†) GND CON 121.9

AIRSPACE: CLASS D svc 1230-0330Z† other times CLASS G.**RADIO AIDS TO NAVIGATION:** NOTAM FILE TYR.

(T) VORW/DME 114.2 TYR Chan 89 N32°21.35' W95°24.21' at fld. 564/6E.

INDOO NDB (LOMW) 320 TY N32°24.93' W95°28.17' 134° 5.0 NM to fld. 512/3E.

ILS 109.9 I-TYR Rwy 13. Class IC. LOM INDOO NDB. Unmonitored when ATCT clsd.

**UPTON CO** (See MC CAMEY on page 342)**UVALDE****GARNER FLD** (UVA)(KUVA) 3 E UTC-6(-5DT) N29°12.68' W99°44.62'

SAN ANTONIO

942 B NOTAM FILE UVA

H-7B, L-19B

RWY 15-33: H5256X100 (ASPH) S-30, D-40, 2D-40 MIRL 0.3% up NW

IAP

RWY 15: REIL. PAPI(P4L)—GA 3.0° TCH 36'. Trees.**RWY 33:** REIL. PAPI(P4L)—GA 3.0° TCH 35'.**SERVICE:** S4 FUEL 100LL, JET A OX 1, 2, 3, 4 LGT ACTIVATE MIRL Rwy 15-33—CTAF.**AIRPORT REMARKS:** Attended 1300-0100Z†. Self svc 100LL with major credit card. Turf strip 3300' X75' parallel to and E of Rwy 15-33 used by crop dusters only.**AIRPORT MANAGER:** 830-278-3315**WEATHER DATA SOURCES:** AWOS-3 124.175 (830) 278-8862.**COMMUNICATIONS:** CTAF/UNICOM 122.8

UVALDE RCO 123.65 (SAN ANGELO RADIO)

Ⓡ HOUSTON CENTER APP/DEP CON 134.95

RADIO AIDS TO NAVIGATION: NOTAM FILE ERV.

CENTER POINT (H) VORTAC 117.5 CSI Chan 122 N29°55.34' W99°12.87' 205° 50.8 NM to fld. 2079/8E.

UVALDE NDB (MHW) 281 UVA N29°10.66' W99°43.54' 328° 2.2 NM to fld. 7E. NOTAM FILE UVA.

VALLEY INTL (See HARLINGEN on page 300)